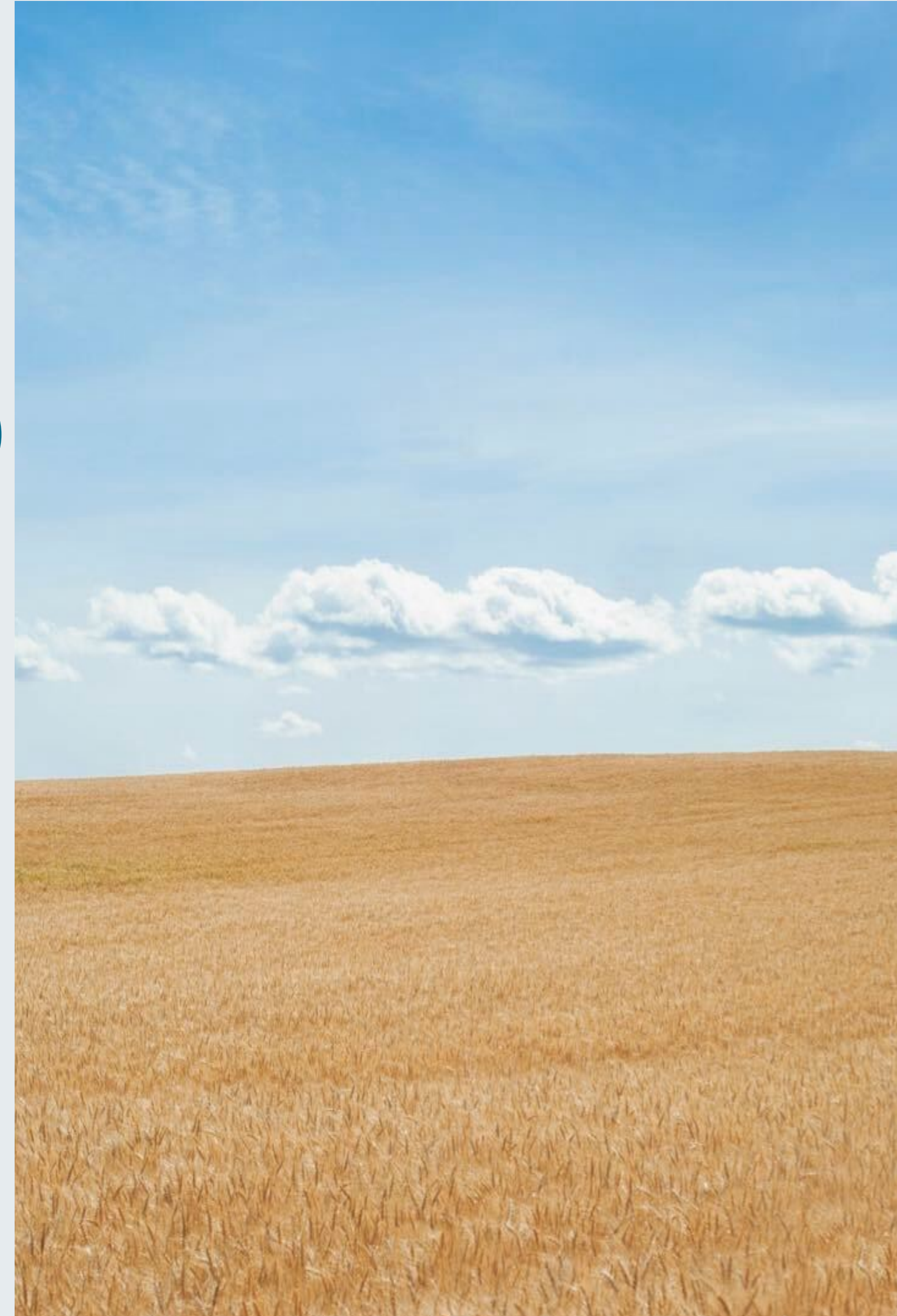


COMMON GROUND FOUNDATION

REPORT TO COMMUNITY 2024

Zach Manntai and For The City
on behalf of Common Ground Foundation

April 18, 2024



AGENDA

How We Got Here

Vision and Mission

Introducing our Brand

Let's Go For A Walk

Next Steps



HOW WE GOT HERE

COMMUNITY ENGAGEMENT AND NEEDS ASSESSMENT

Between November 2022 and March 2023, For The City conducted a comprehensive needs assessment that touched the over 160,000 residents of North Central Calgary, with a significant proportion being visible minorities. This included digital scans, literature reviews, and interviews with community members and stakeholders to understand the requirements for a new community hub.

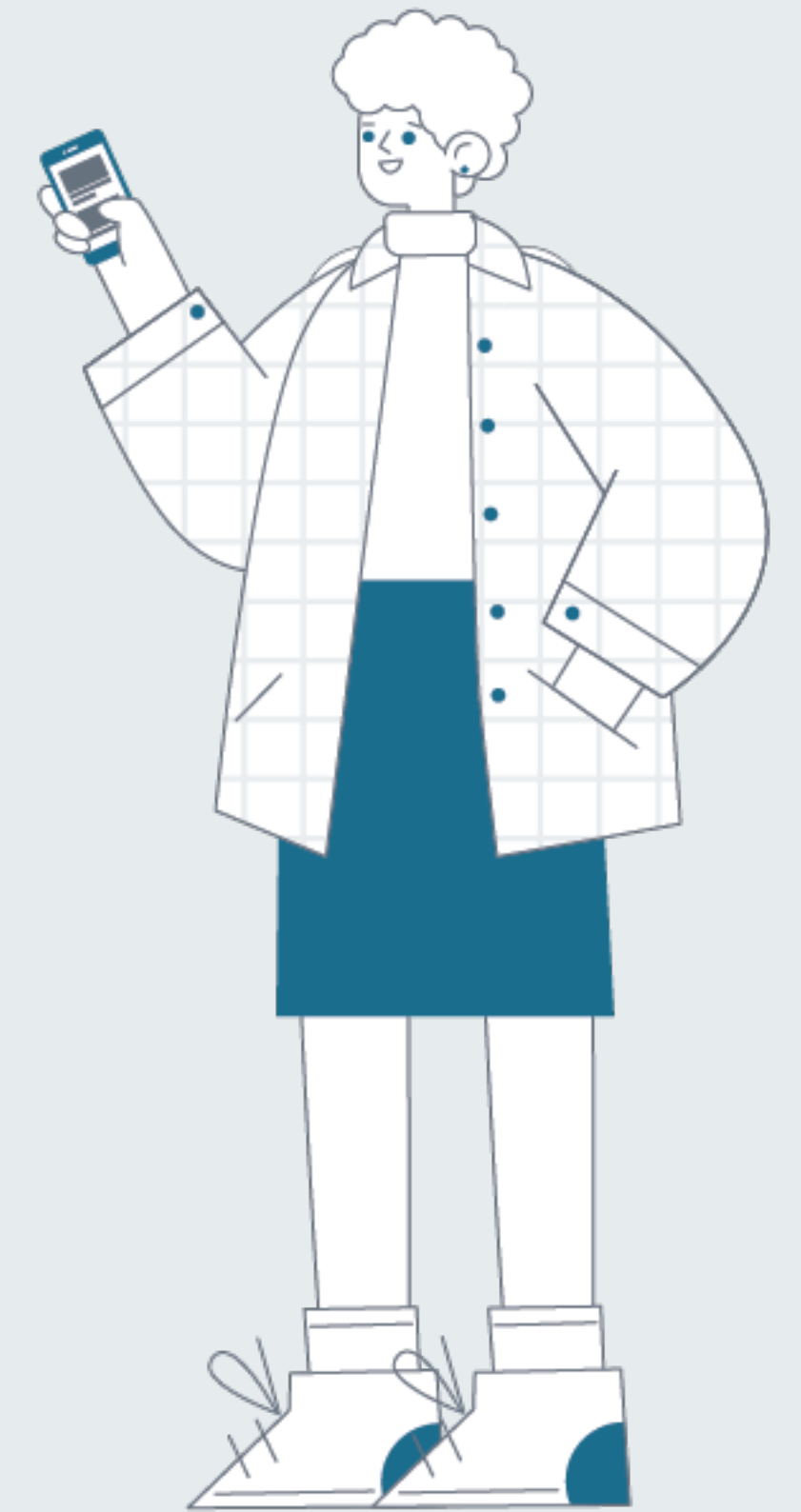
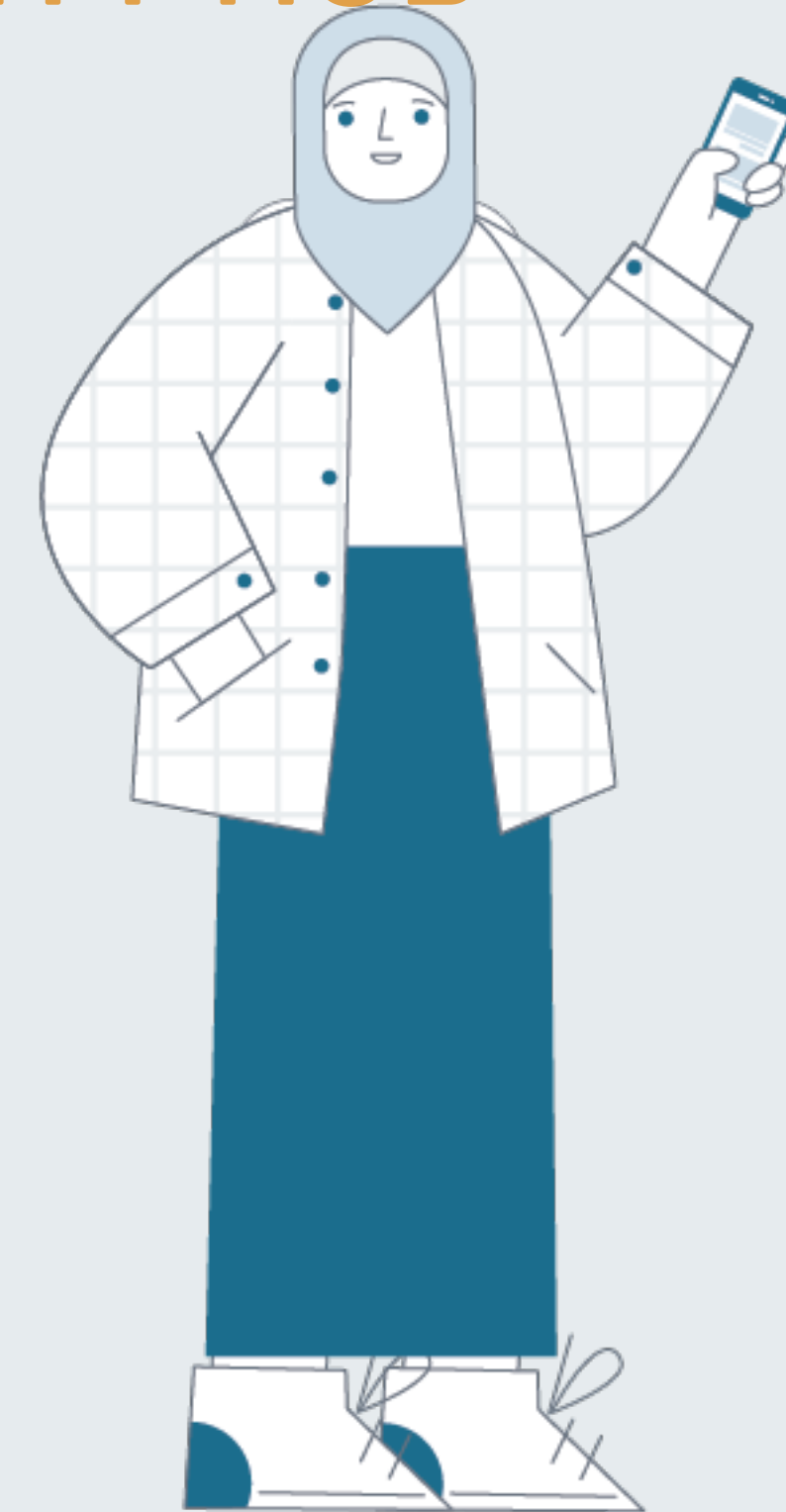




HOW WE GOT HERE

DEFINITION AND PURPOSE OF THE COMMUNITY HUB

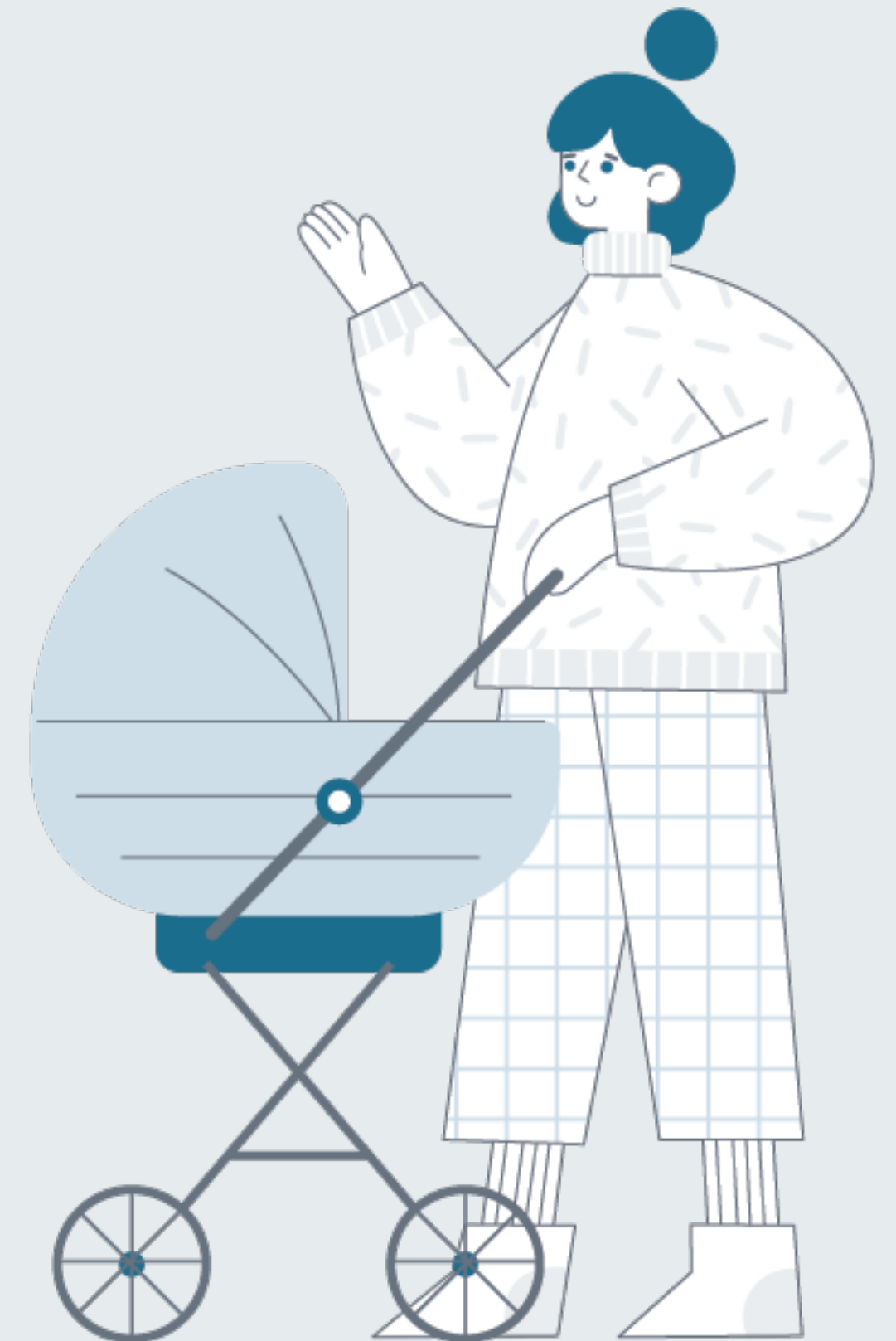
A community hub is envisioned as a central, accessible public space valued for community gatherings and as an access point for various activities, services, and events. The hub aims to address service coordination, placemaking, and community building, adapting successful models to local needs.



HOW WE GOT HERE

FUTURE DIRECTIONS AND VISION

The report outlined the next steps, including refining architectural plans and engaging more deeply with potential funding partners and stakeholders. The vision is to create a vibrant communal space that fosters a sense of belonging, supports diverse community interactions, and ensures long-term sustainability through various revenue-generating activities.



HOW WE GOT HERE

STRATEGIC INITIATIVES AND PARTNERSHIPS

Partnership with EMI (February - June 2023):

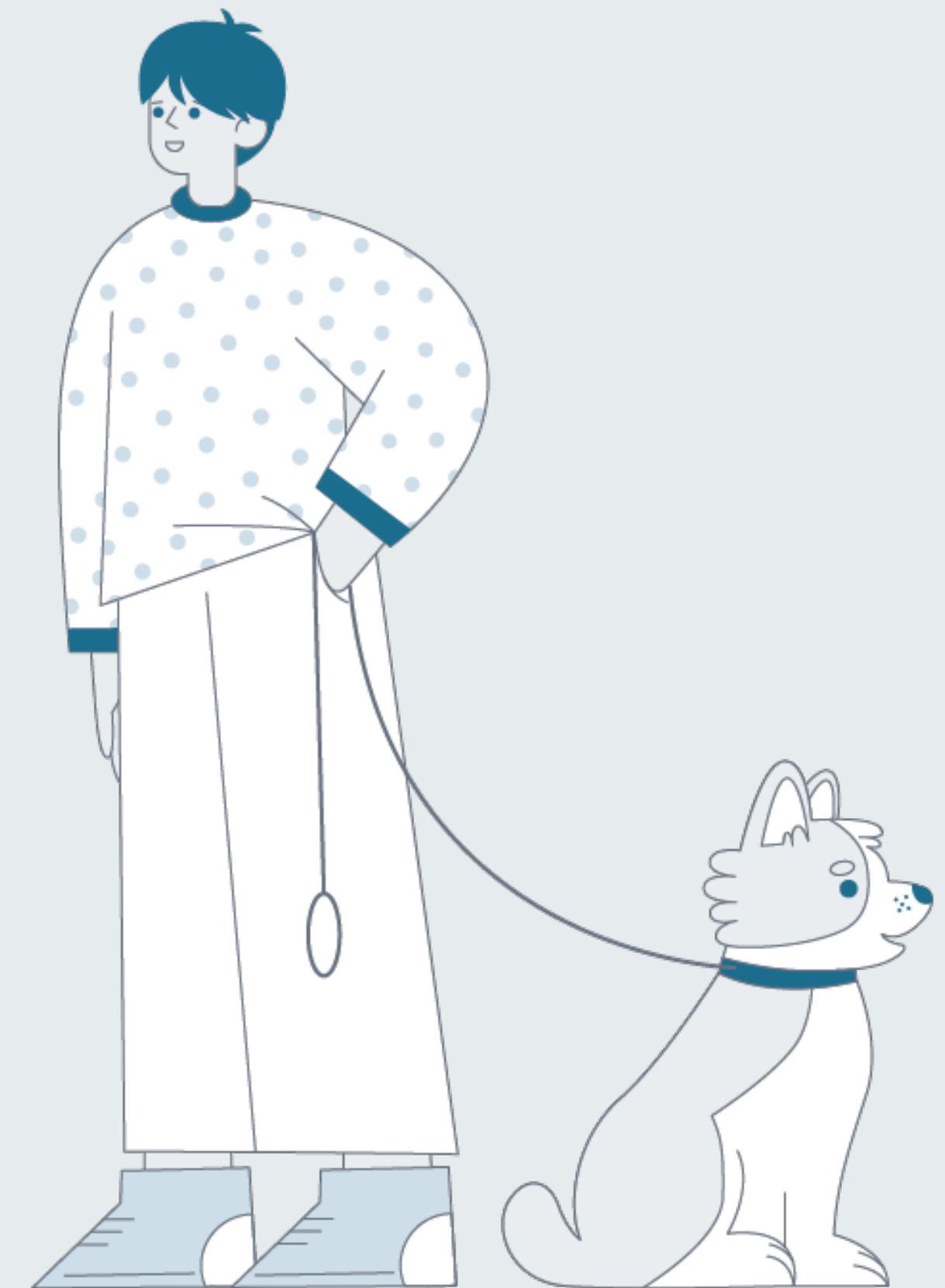
- Developed detailed CNCCH programming, with the final report presented in June.

Engagement with Linmac LLP (April 2023):

- Formalized structure for the Common Ground Foundation and Common Ground Ventures Limited.

RFP Development and Release (June - July 2023):

- Solicited in July, attracted seven applicants, highlighting community and stakeholder interest.



HOW WE GOT HERE

ARCHITECTURAL JOURNEY AND ORGANIZATIONAL GROWTH

Selection of Kasian Architecture (October 2023):

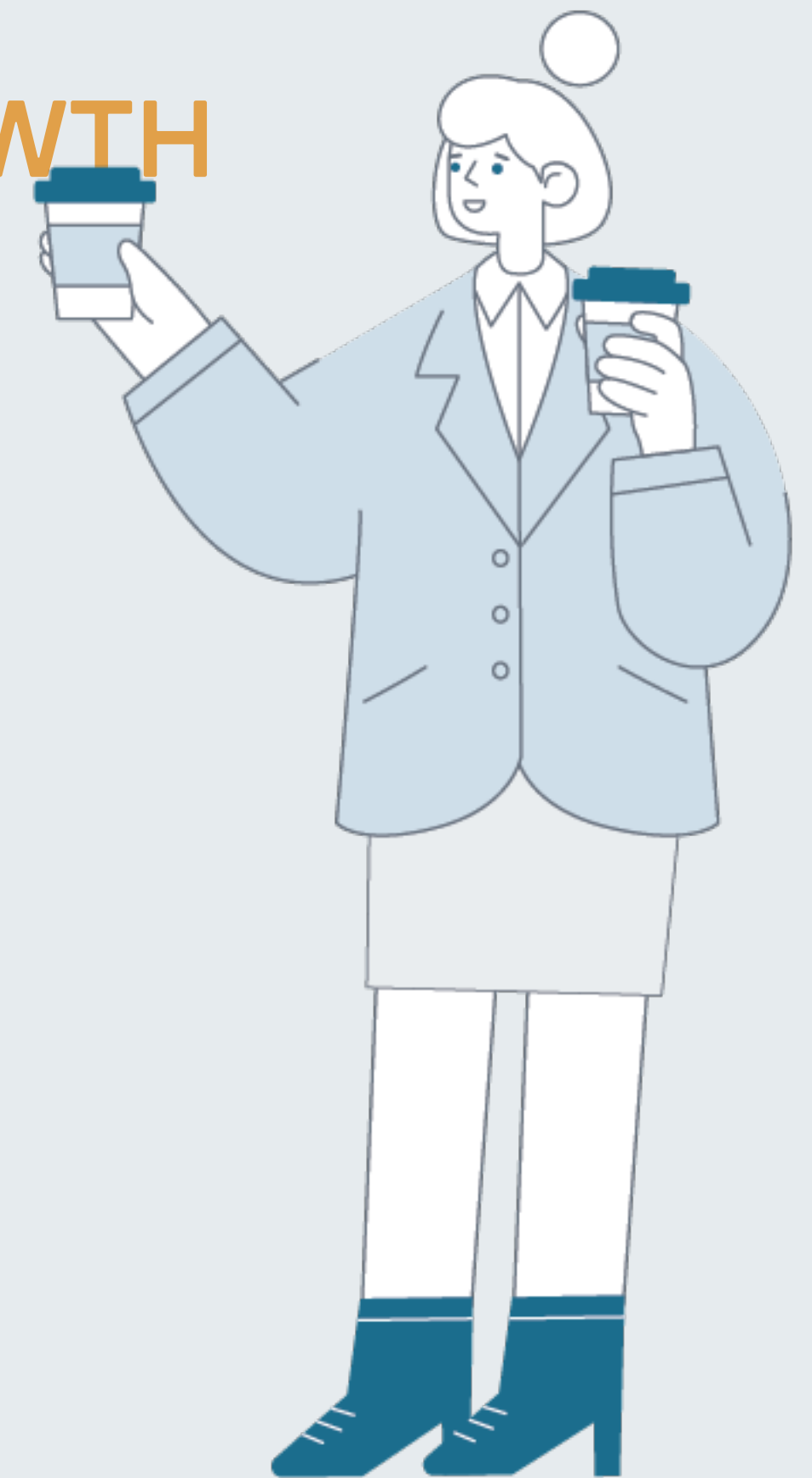
- Initially chosen to lead the architectural design.

Transition to GGA Architecture (March 2024):

- Changes due to staff departures.

Incorporation Milestones:

- Common Ground Foundation - January 2024
- Common Ground Ventures Limited - November 2023



HOW WE GOT HERE

ARCHITECTURAL JOURNEY AND ORGANIZATIONAL GROWTH

Financial Contribution from New Beginnings Church:

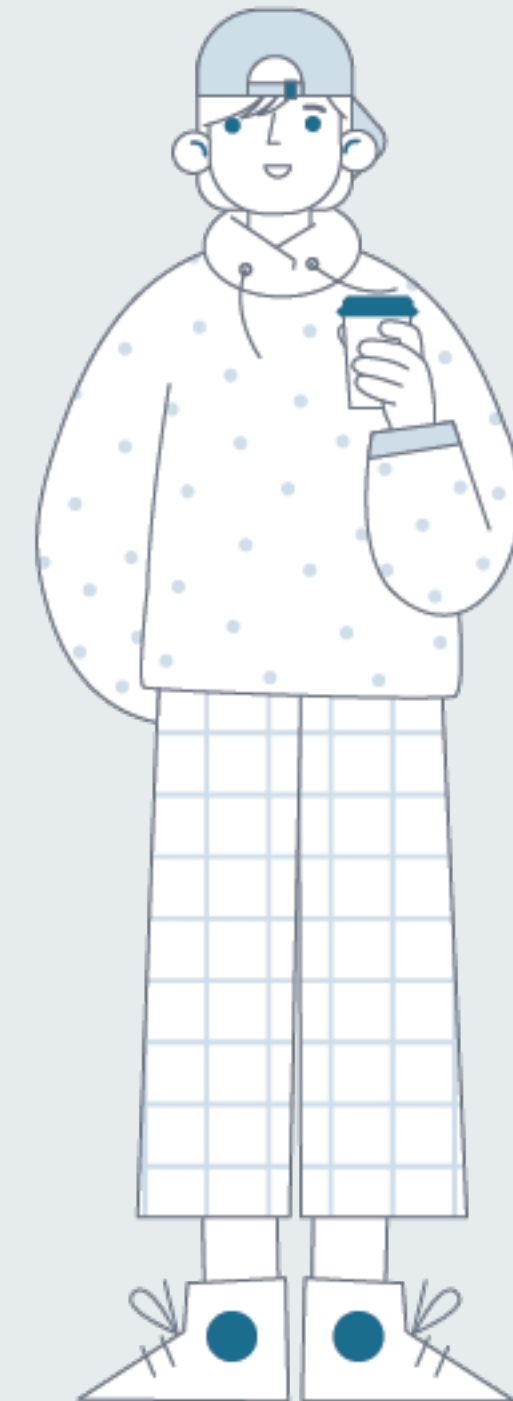
- Over \$1.1 million raised over the last 20 years.

Transfer of Funds:

- Funds were transferred to Common Ground Ventures Limited in March 2024.

Transfer of Land:

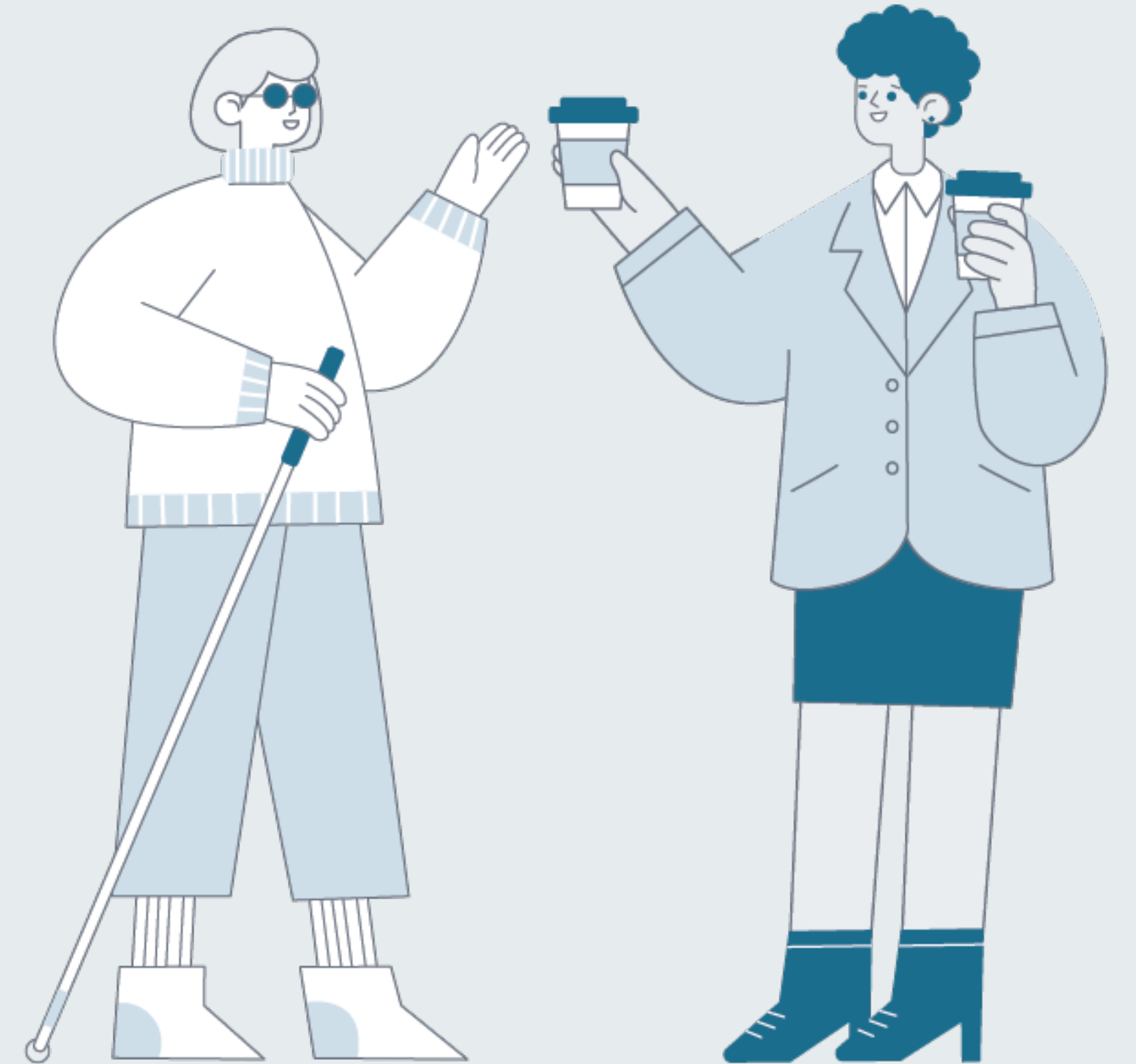
- 20 acres were transferred to secure the project's physical foundation in December 2023.



INTRODUCING OUR NAME & BRAND

Why the name Common Ground?

What does it mean?



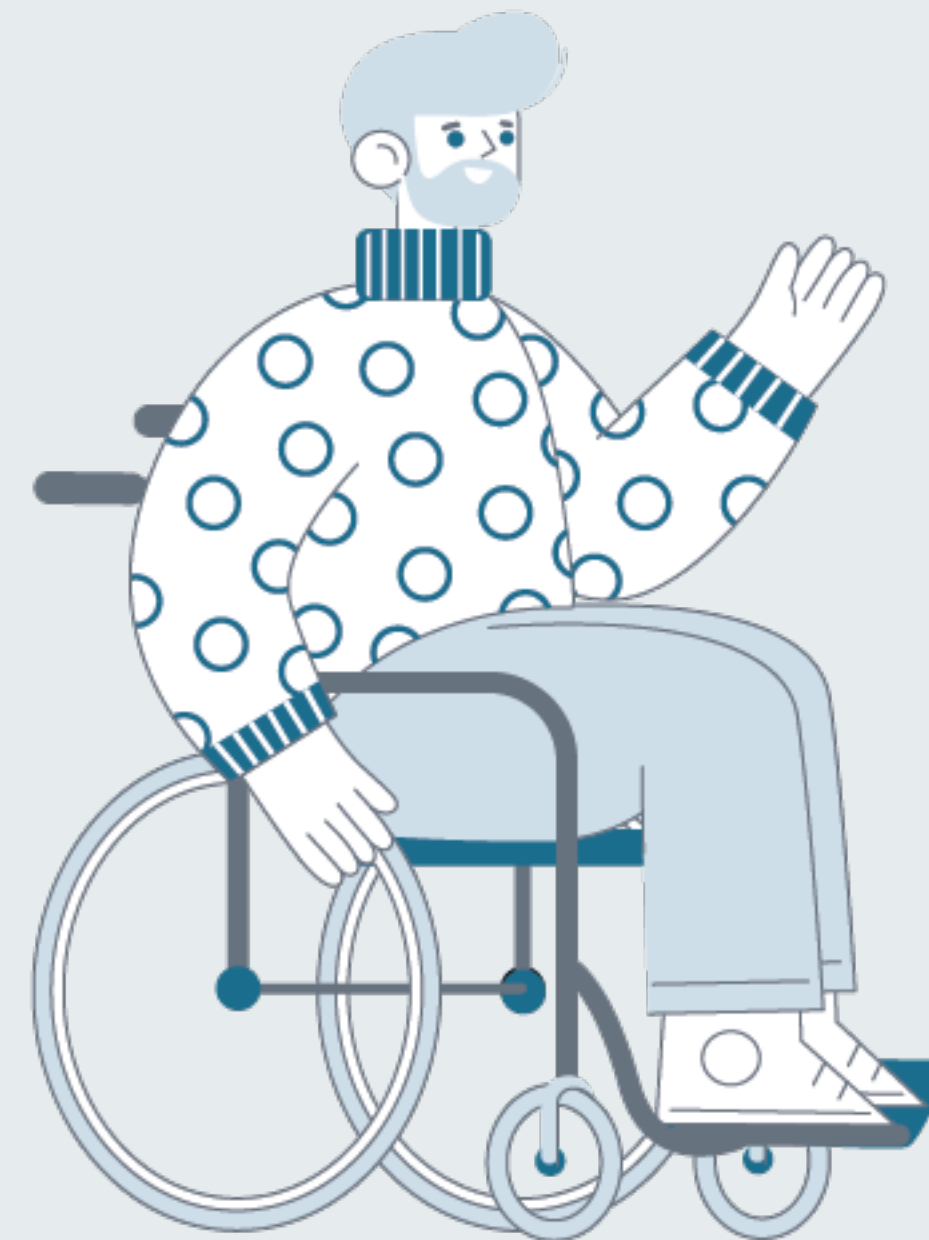
VISION & MISSION

Vision Statement:

We envision a community where every person has the opportunity to thrive in all facets of life, empowered by a network of support that fosters economic, physical, mental, spiritual, and social well-being.

Mission Statement:

Our mission is to cultivate welcoming spaces that ignite creativity, foster connections, and enable individuals and families to grow together, strengthening the fabric of our community.

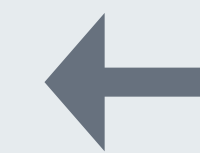




common ground
FOUNDATION



Monogram

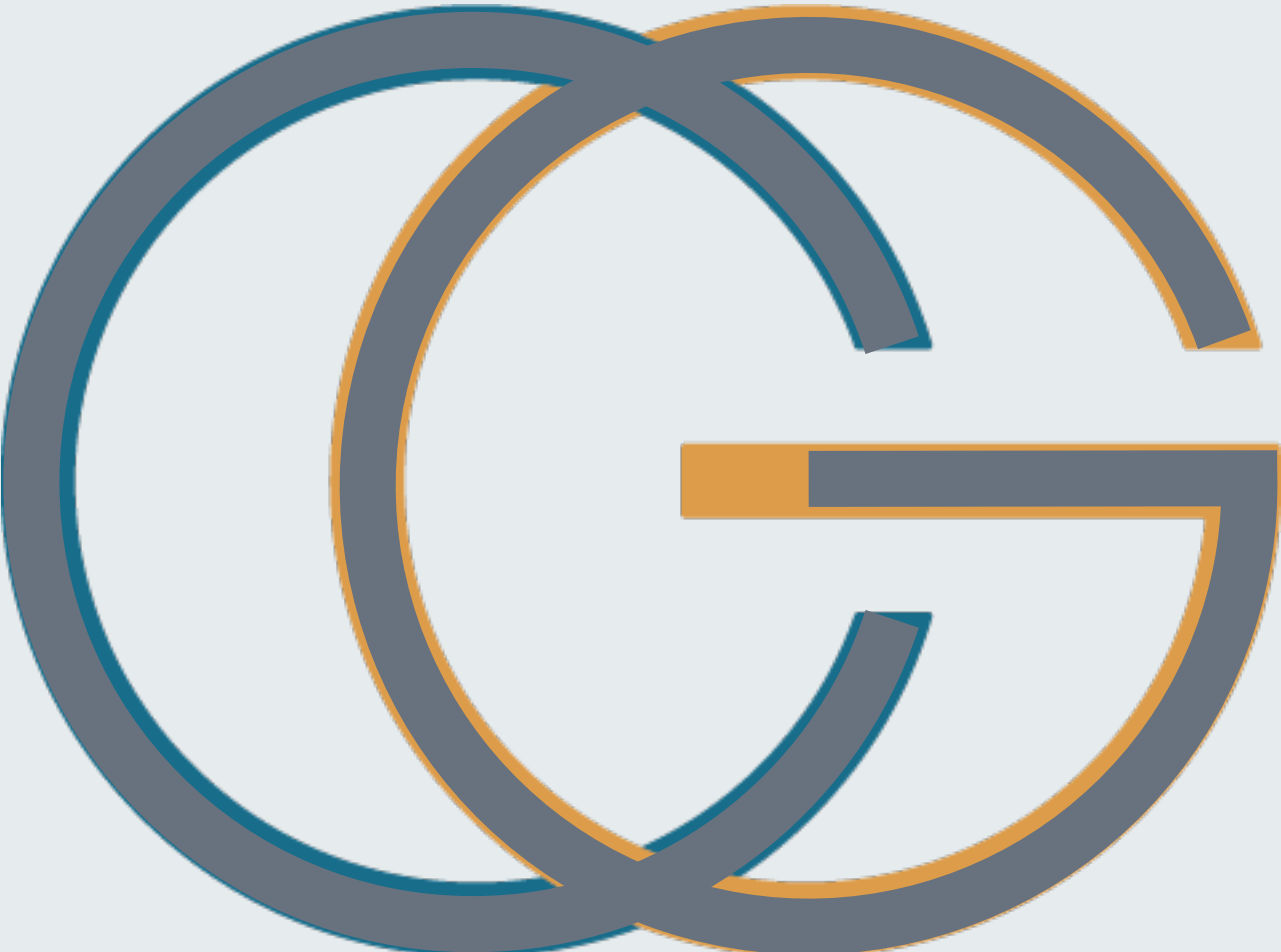


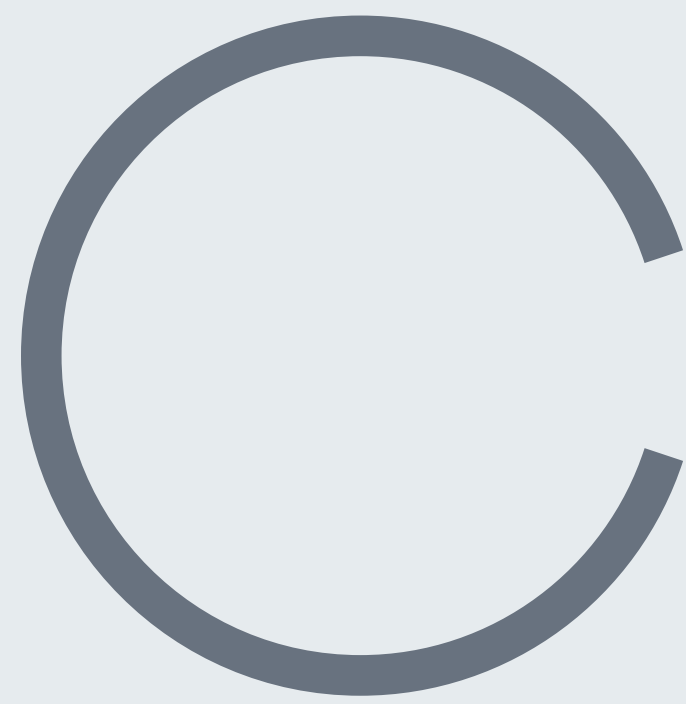
Colour Palette

common ground
FOUNDATION



Typography

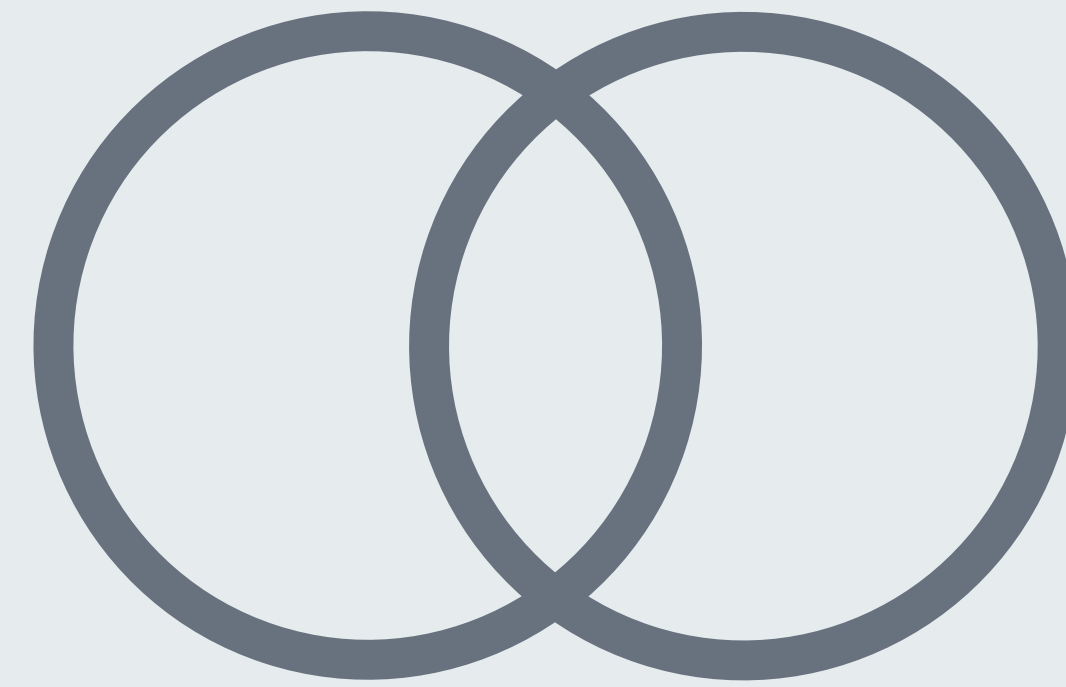


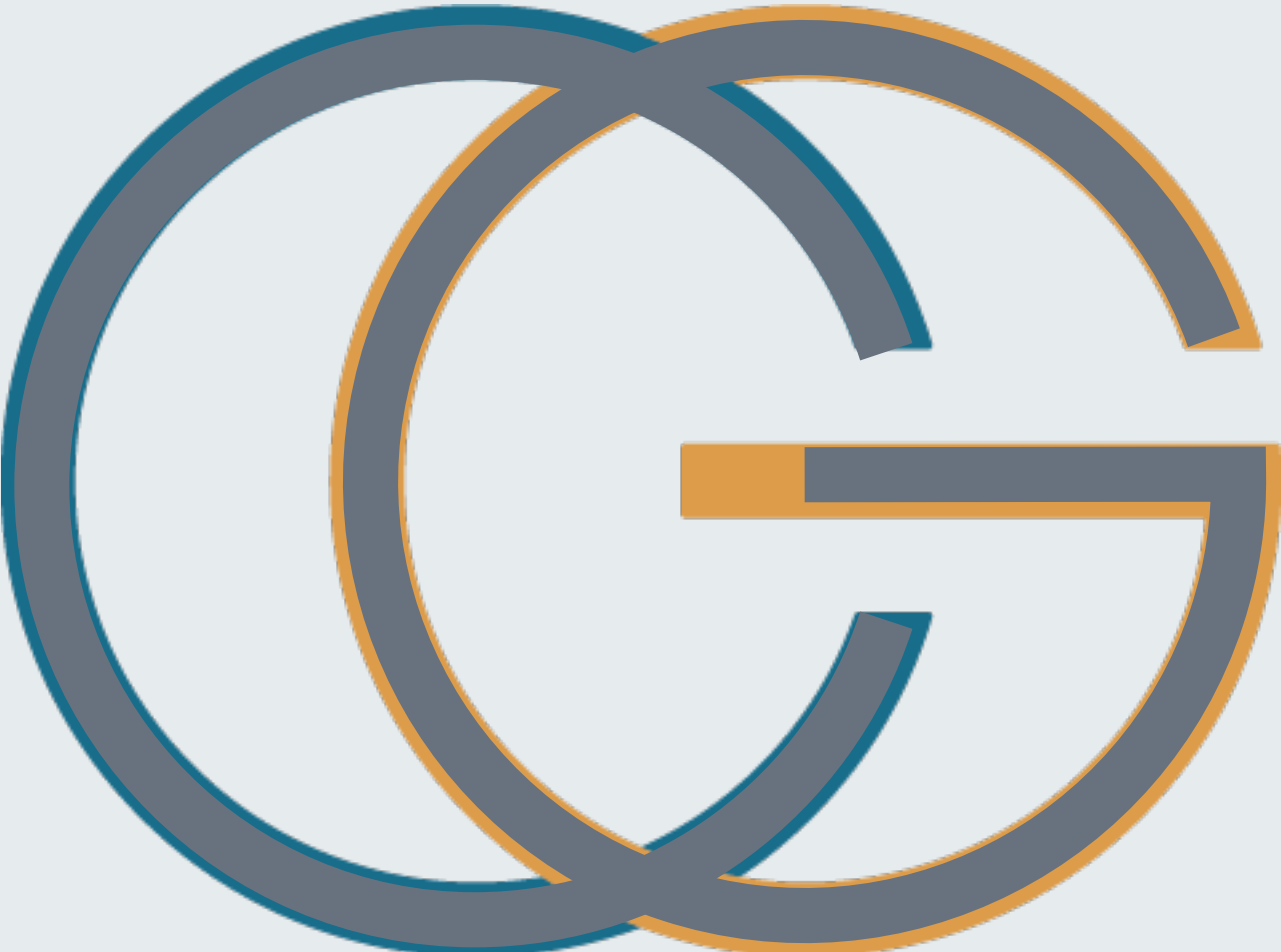


+



+







common ground
FOUNDATION



common ground
FOUNDATION

THE JUNCTION ON COMMON GROUND

What is the Junction?

How will this impact our community?



THE JUNCTION ON COMMON GROUND

Food Hall & Cafe

Performance Theatre

Co-Working & Non-Profit Office Space

Gymnasium

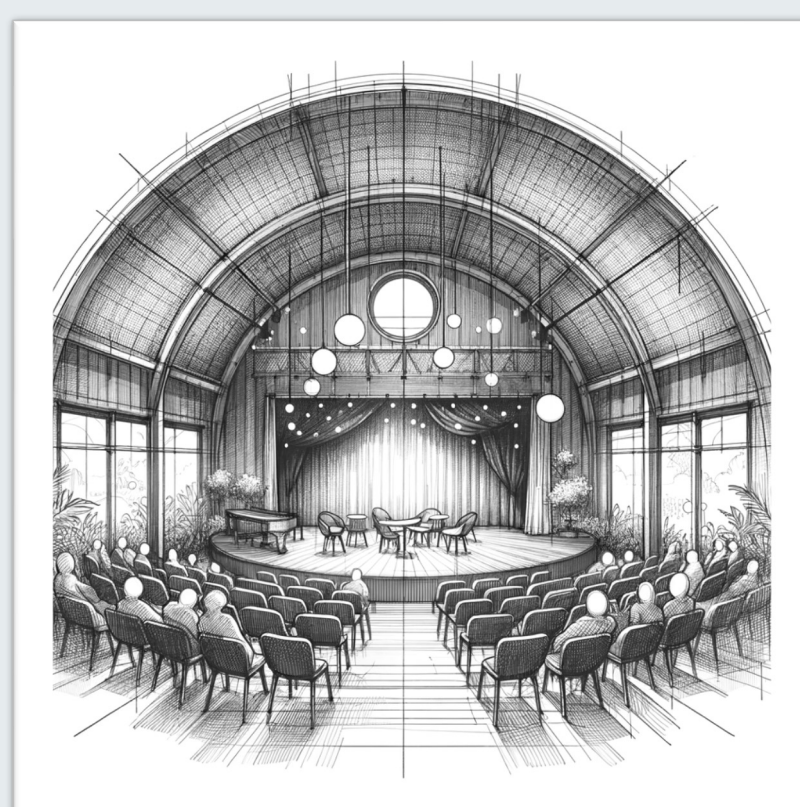
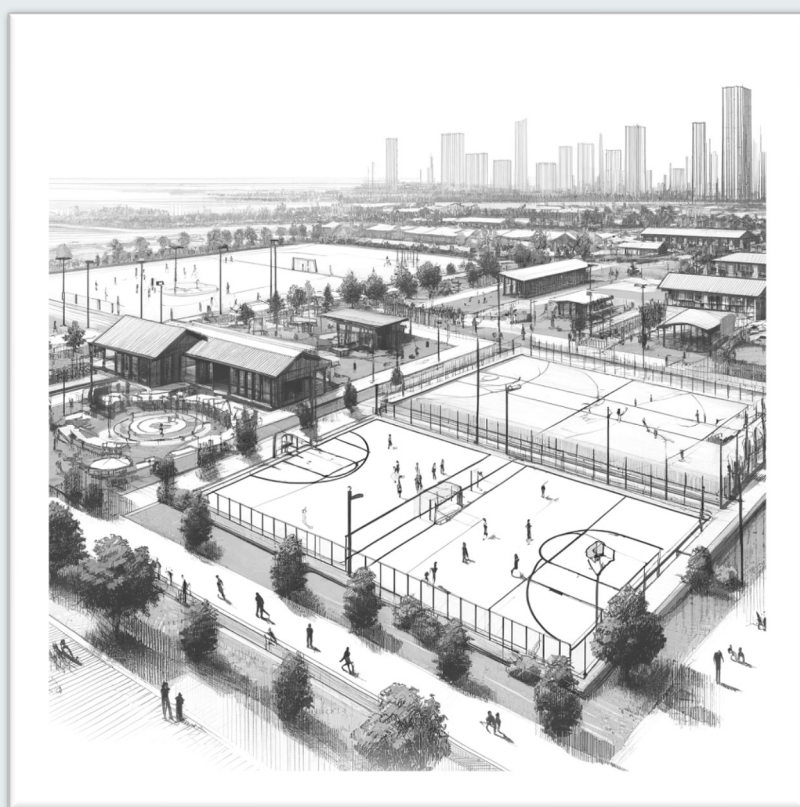
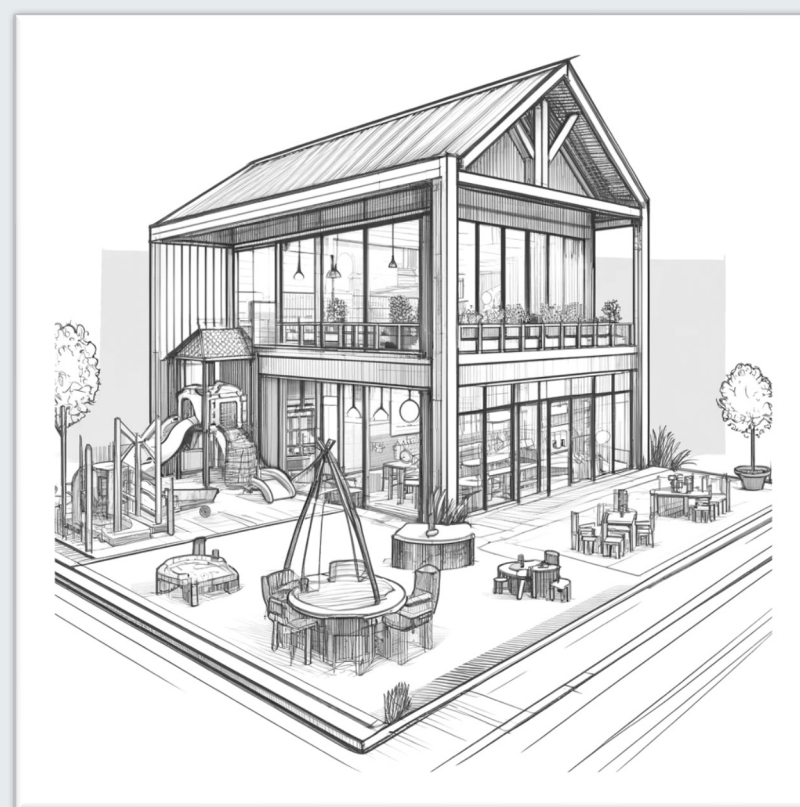
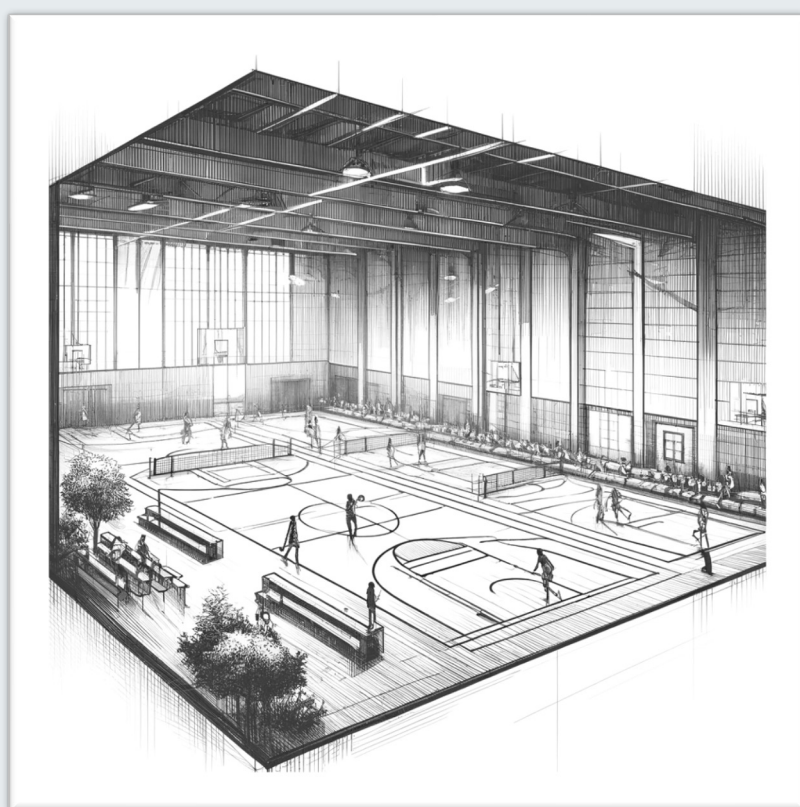
Daycare & Commercial Retail Units

Parks & Sports fields

Housing



LET'S GO FOR A WALK



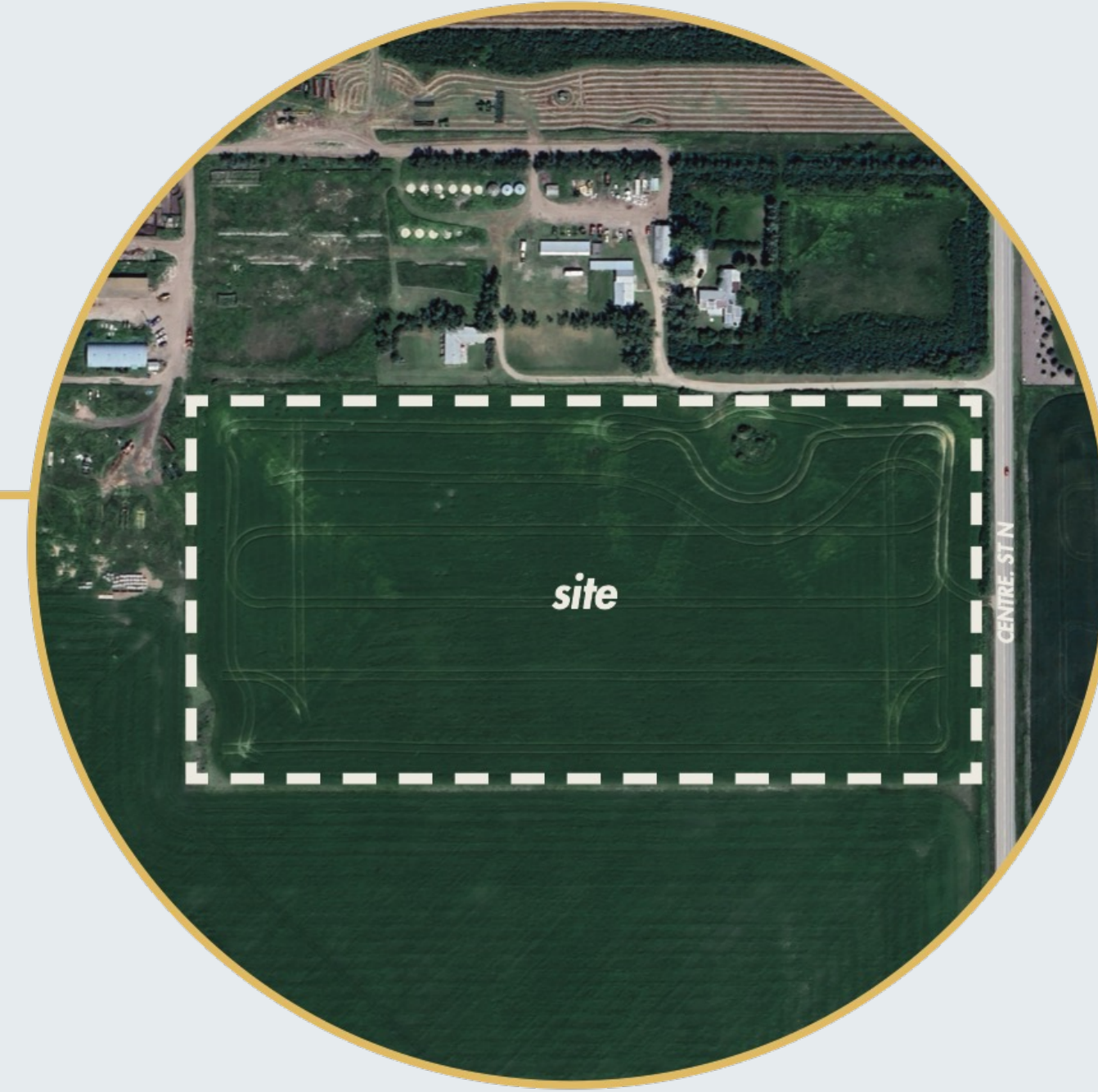
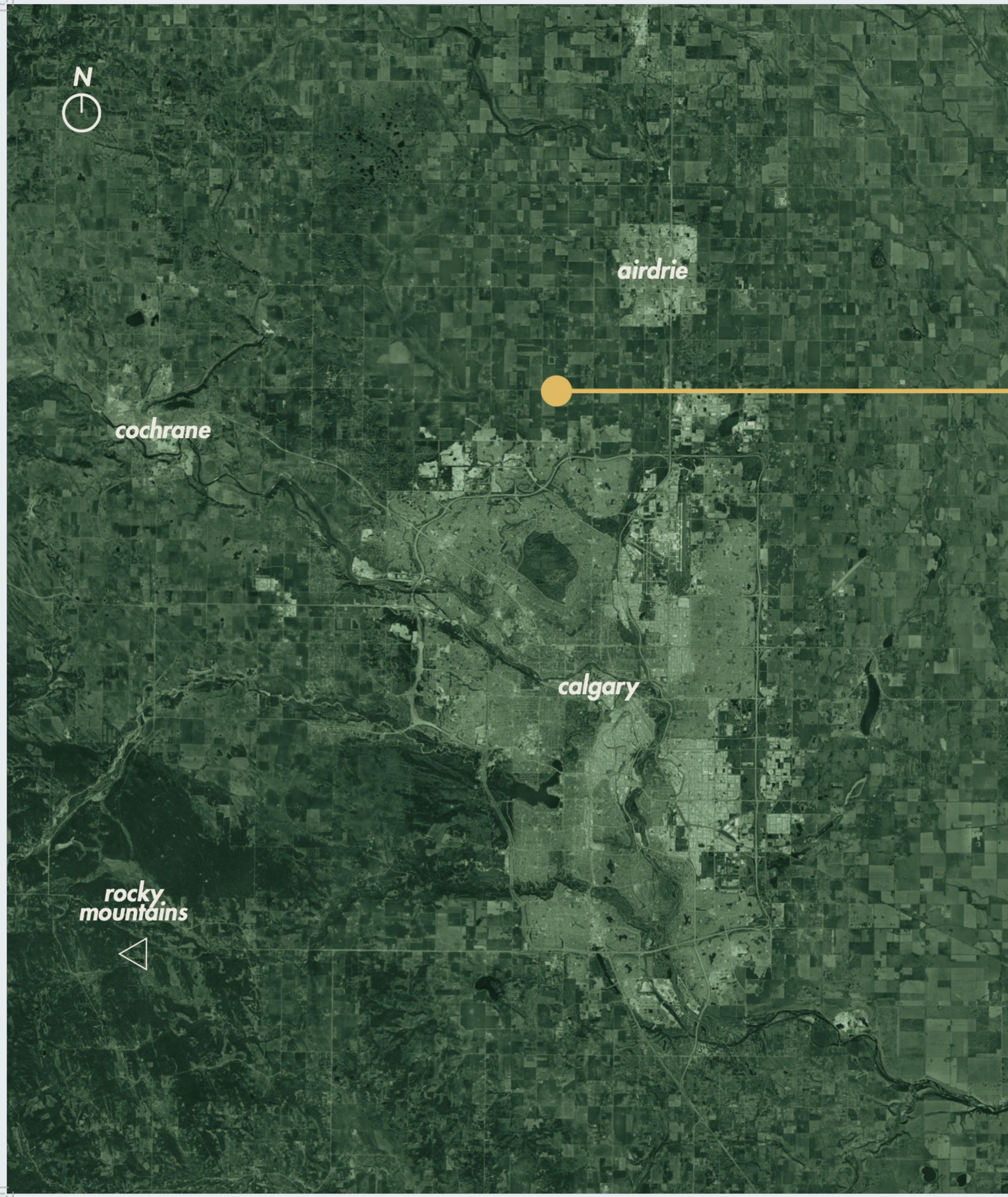
WHAT DID WE HEAR?



the junction on

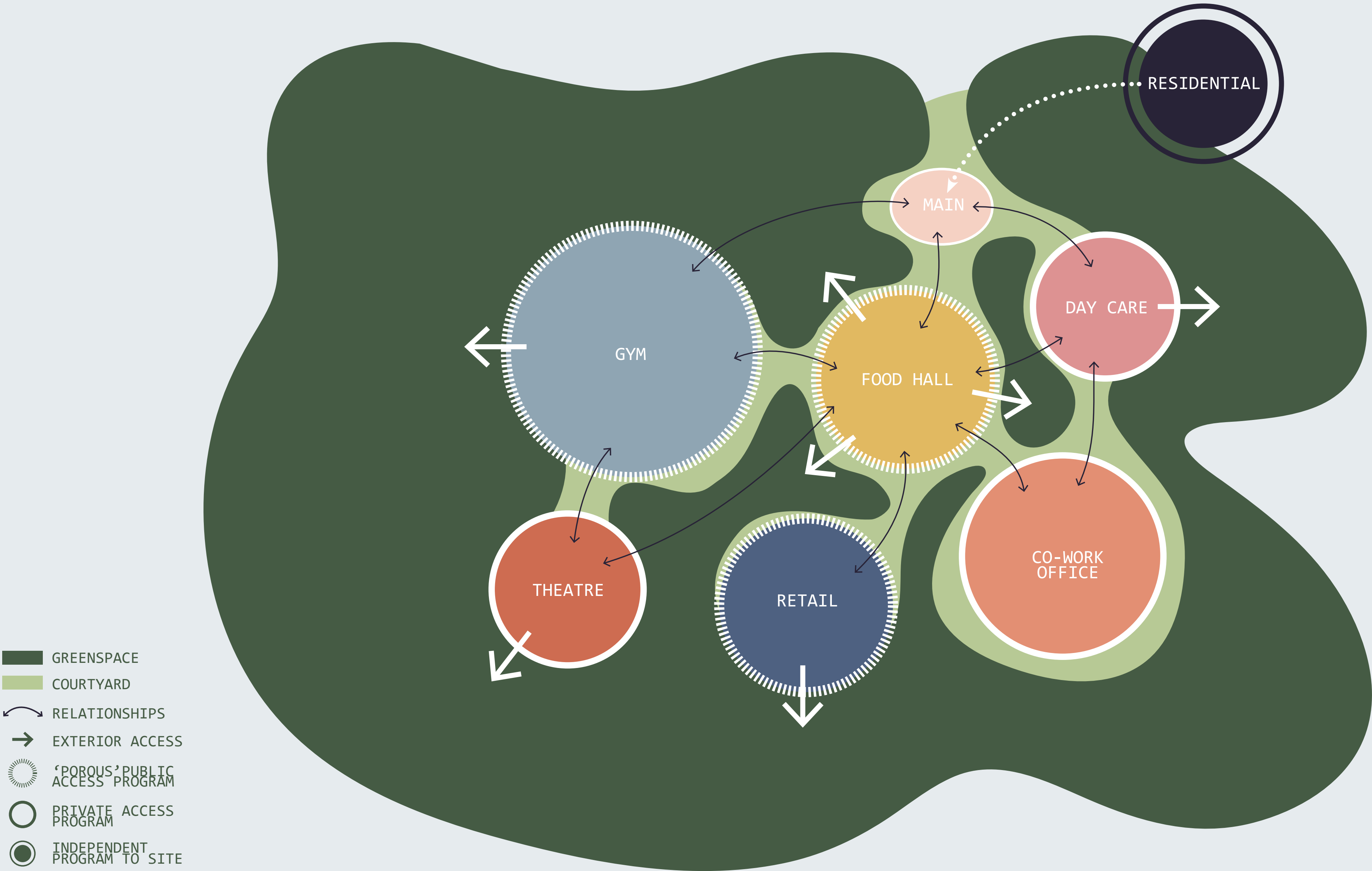


COMMON GROUND

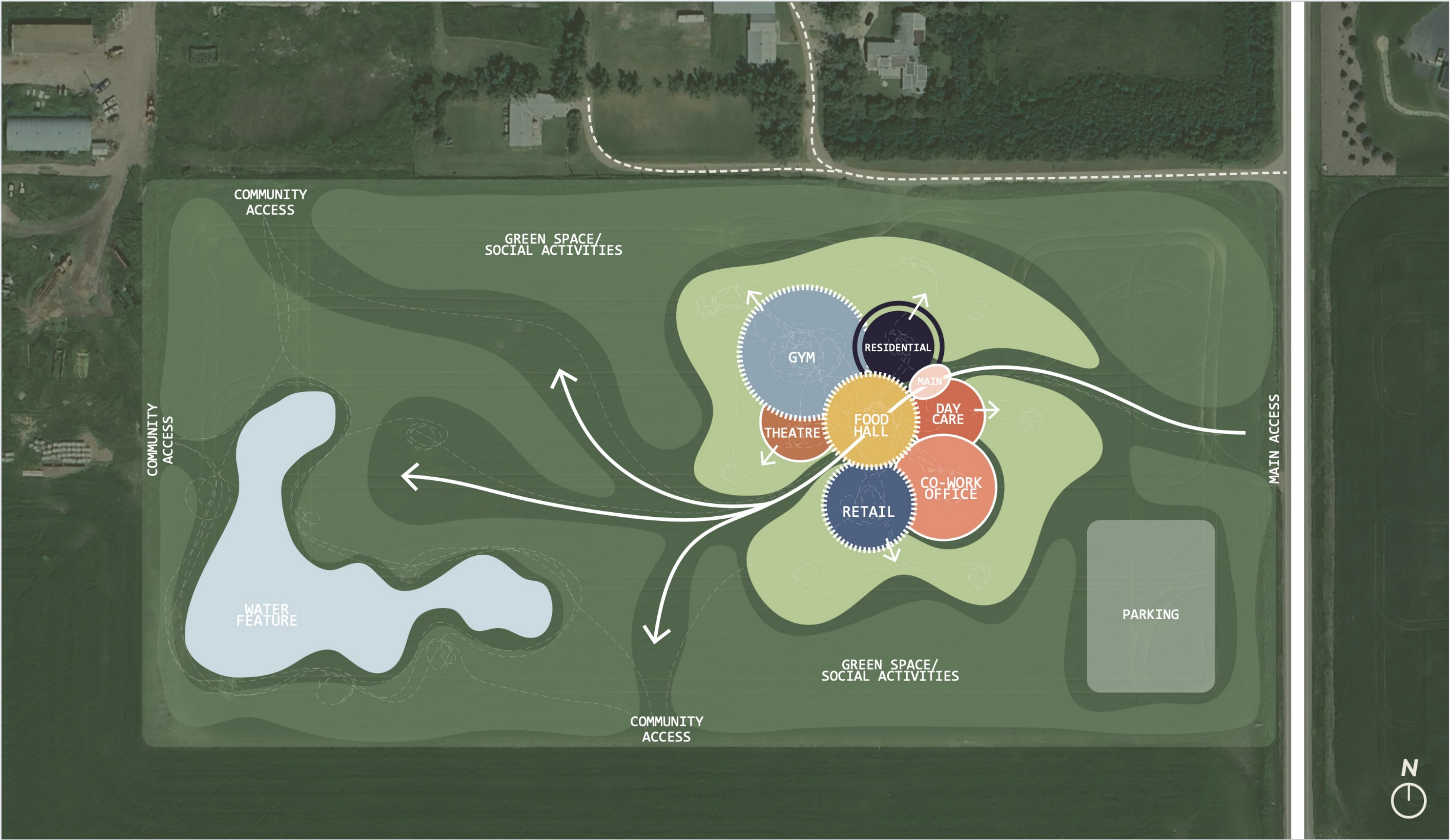


THE JUNCTION ON COMMON GROUND IS LOCATED ON THE EDGE OF NORTH CALGARY, NEAR THE COMMUNITY OF LIVINGSTON. THE PRIMARY ENTRANCE TO THE SITE IS OFF CENTRE STREET, MAKING IT AN IDEAL LOCATION FOR A COMMUNITY HUB THAT SERVES NOT JUST CALGARY BUT ALSO NEARBY CITIES AND TOWNS LIKE COCHRANE AND AIRDRIE. SURROUNDED BY GREENERY, A VIEW OF THE ROCKY MOUNTAINS AND BEING NEAR CITY NEIGHBORHOODS, THE SITE IS POISED TO FOSTER COMMUNITY GROWTH AND DEVELOPMENT

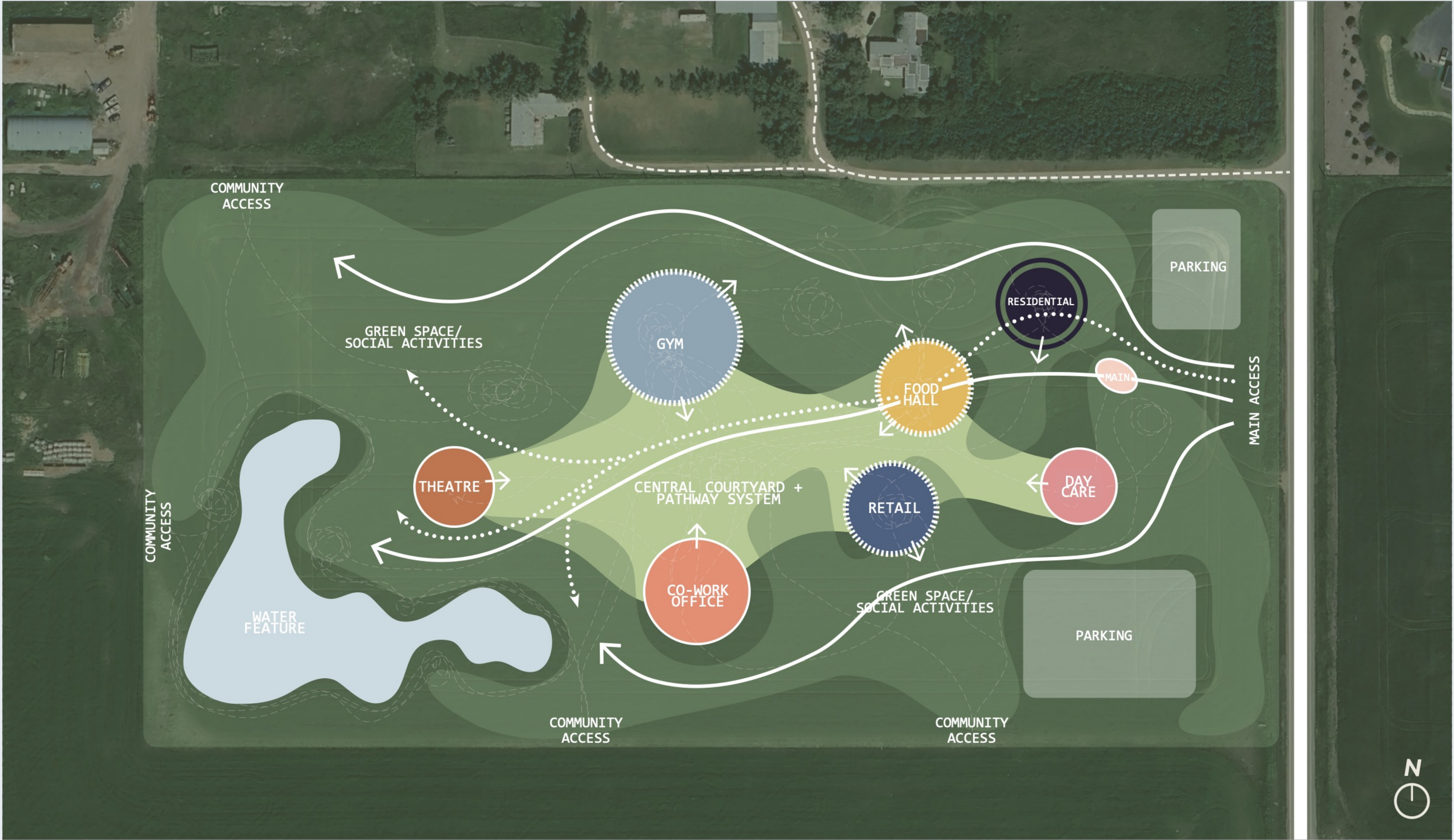
PROGRAM STUDY:
RELATIONSHIPS



A. URBAN INTENSITY

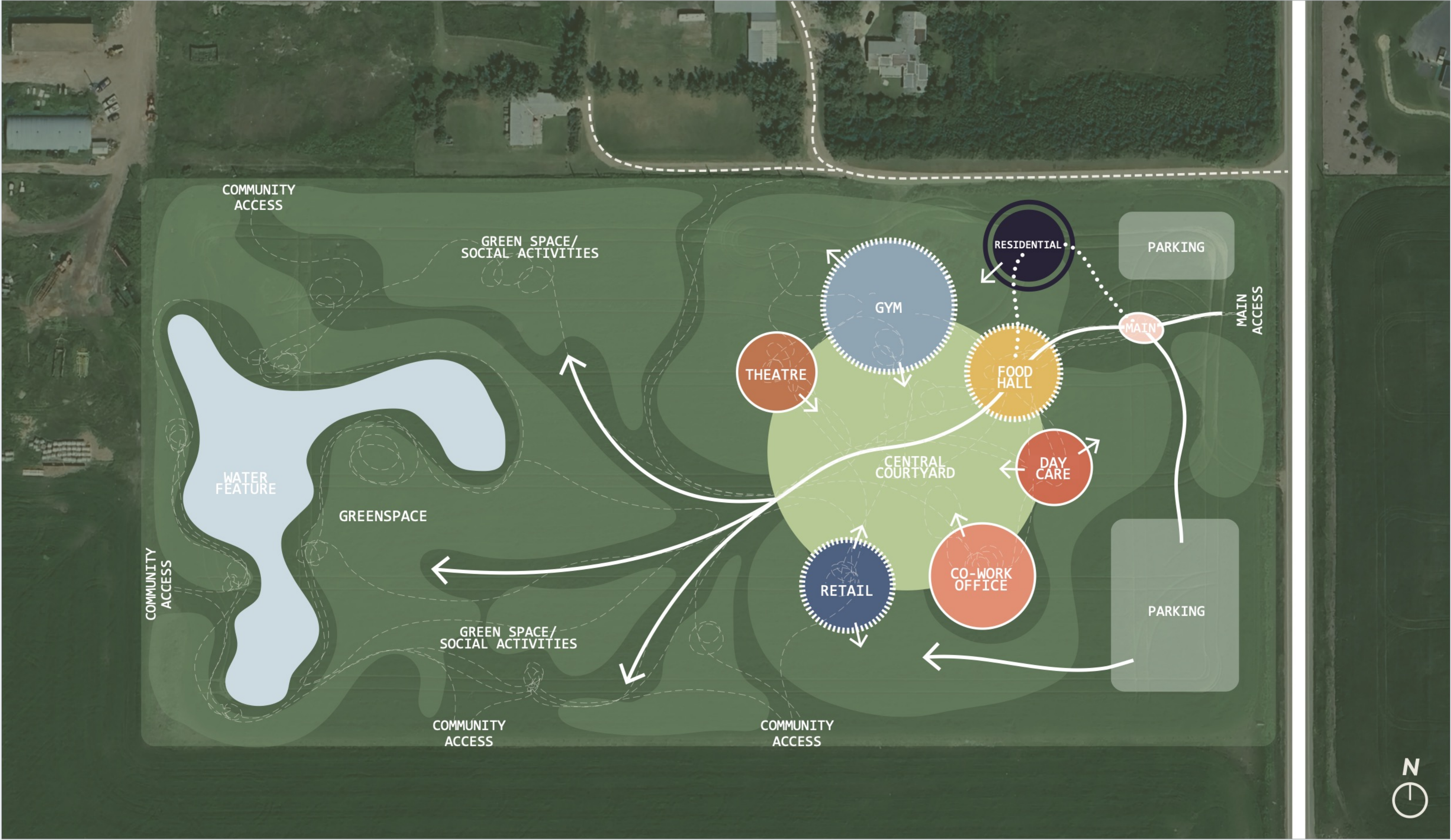


B. MOVING THROUGH NATURE



- GREENSPACE
- COURTYARD
- WATER
- EXTERIOR ACCESS
- MOVEMENT THROUGH SITE
- 'POROUS' PUBLIC ACCESS
- PRIVATE ACCESS
- INDEPENDENT PROGRAM TO SITE

C. CENTRAL COURTYARD



GREENSPACE

COURTYARD

WATER

EXTERIOR ACCESS

MOVEMENT THROUGH SITE

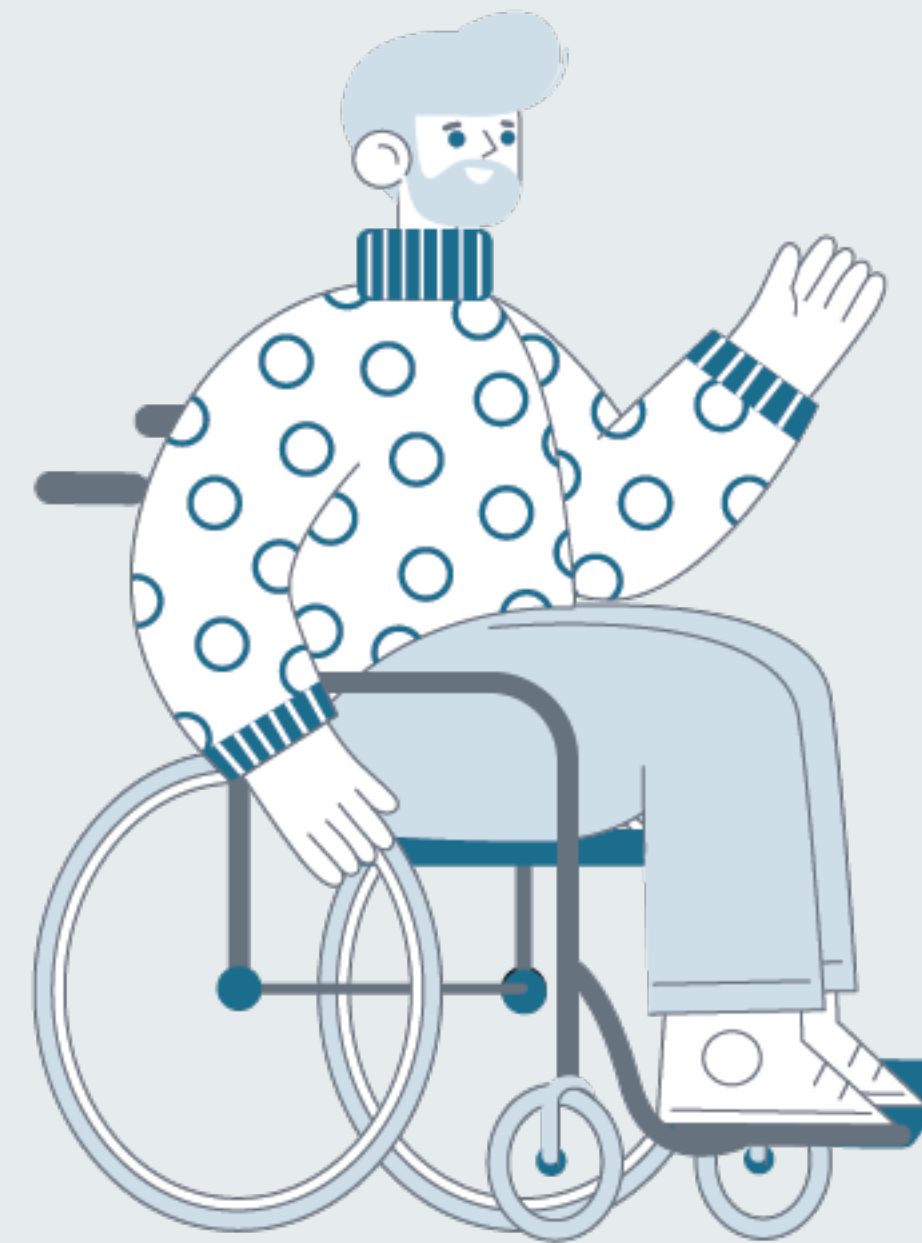
'POROUS' PUBLIC ACCESS

PRIVATE ACCESS

INDEPENDENT PROGRAM TO SITE

NEXT STEPS

How do you want to participate?



JUST THE BEGINNING...

@commongroundyyc

www.commongroundfoundation.ca

hello@commongroundfoundation.ca



common ground
FOUNDATION